

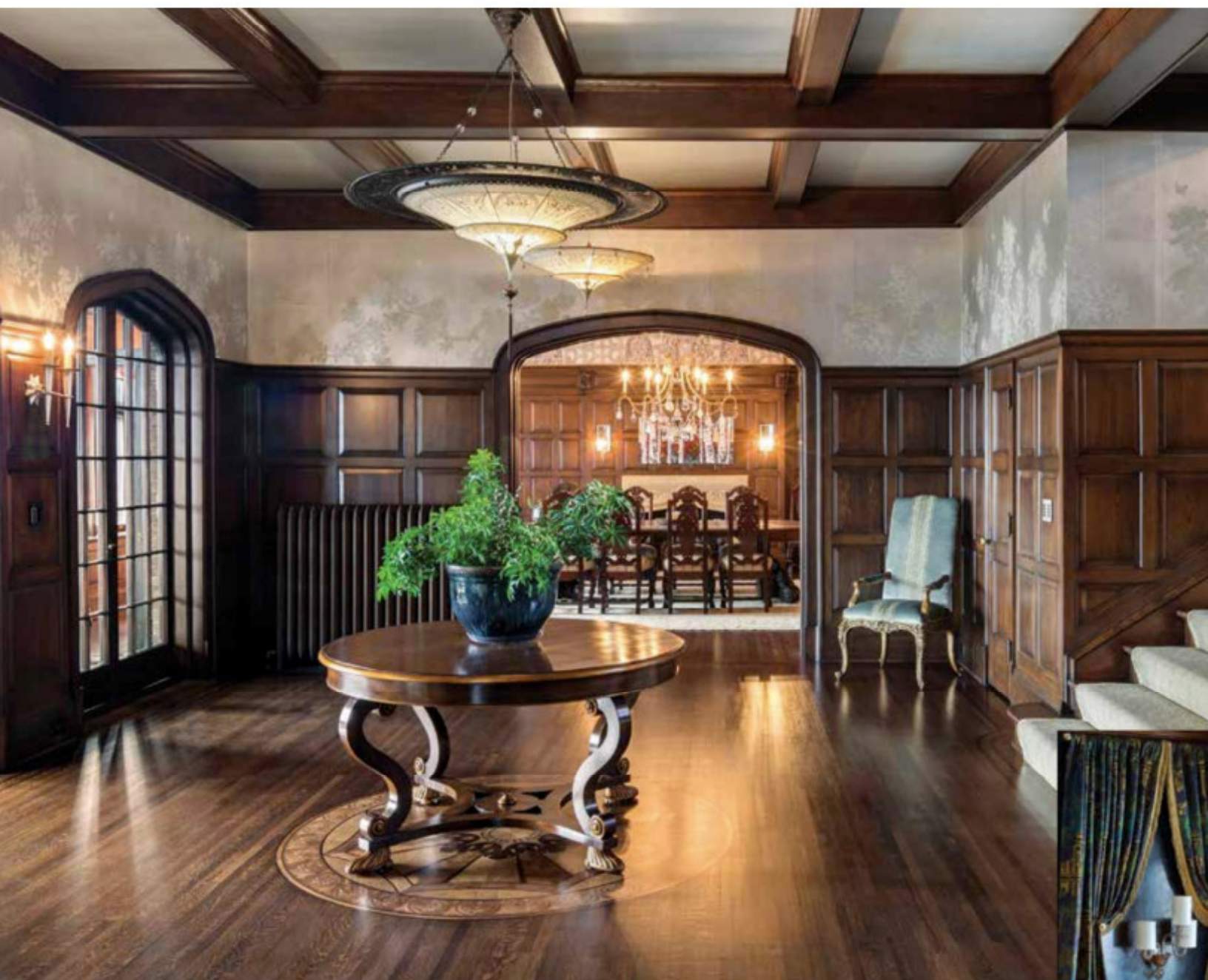
LSM

LAKE SOCIETY MAGAZINE



COLLECTORS ISSUE

Volume 10 Number 4 Winter 2018 \$12.00



ENTRY HALL

Hand-painted Gracie wallpaper not only brings lightness to an imposing foyer. The flowing, organic lines augment the beauty of the wood beams, wall paneling and lustrous floor. Note, too, how a simple potted plant elevates the space, calling attention to itself while bringing into relief the meticulous craft of the artisans who built this home.

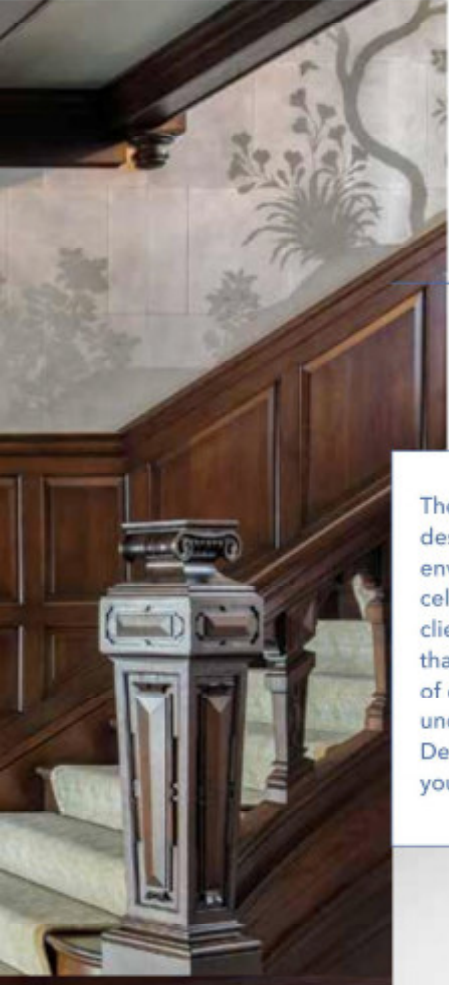
STAIRWAY LANDING

The dimensions of this space combined with the stunning beauty of its stained glass windows invite people to linger. When the homeowners host large gatherings, the landing becomes a magnet for conversation. Day to day, it's a preferred site for reading and writing. The juxtaposition of vibrantly colored pillows and the deep blues of the wall treatment adds another level of visual interest to the space.



DESIGN CHRONICLES

By Sandy LaMendola, ASID



The mission of an interior designer is to create environments that facilitate, celebrate and enrich our clients' life journeys. To do that, we embark on a voyage of our own - one of discovery, understanding and creation. Design Chronicles invites you along for the ride.



Lessons in transition

From hallways and landings to anterooms and entrance halls, transitional spaces not only set the stage for your home's principal living areas, they present their own opportunities to express your spirit, enhance the utility of your environment, and heighten your enjoyment of living there.

Here we highlight large transitional spaces, but our advice on how to approach them applies to homes of all sizes:

Create a distinctive aesthetic to set the mood. In each residence, the walls were the starting point. Ethereal wallcovering brings lightness to the reception area, while custom deep sea-blue Venetian plaster balances the volume of the landing.

Use distinctive lighting. Focus both on the beauty of the fixtures – in this case, fantastic Fortuny silk lighting and Murano glass sconces – as well as the unique character of illumination they provide.

Enhance existing features. Note the original millwork and glazing in each residence's windows. Reverent treatment was key to seamlessly blending the client's taste into the historical mix.

Fearlessly seize opportunity. The window seat at the amazing stained-glass window all but demands to be a destination. And don't be bound by rules. It would be a crime to cover up the stained glass, so instead we put the "window treatment" on the adjacent wall.

Celebrate the beauty throughout your home and give yourself license to enjoy every inch of it. When you think beyond specific rooms, the sum will indeed be greater than the parts.

Twist Interior Design | Minneapolis | twistinterior.com

Entry Hall Original Architect: William Channing Whitney. Project Architect: Charlie&Co Design. Contractor: John Kraemer & Sons. Photographer: Spacecrafting.

Stairway Landing Original Architect: Harry Wild Jones. Project Architect: Charlie&Co Design. Contractor: John Kraemer & Sons. Photographer: Gaffer Photography. Stylist: Heather Neurer.